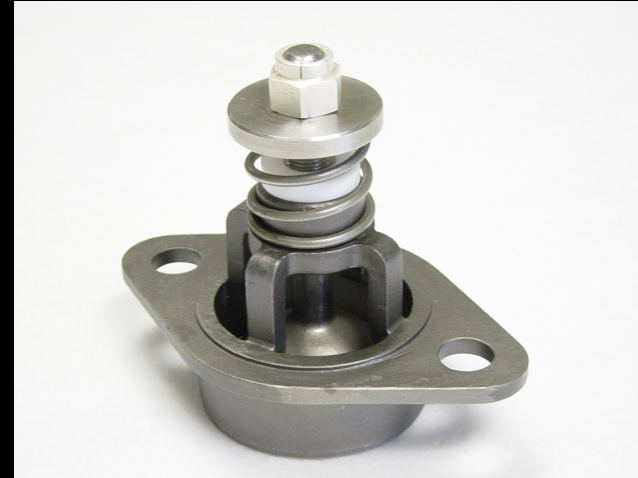


ASC



- ASC S105M
- 316 SS
- 30,000 #/Hr
- 3-5 PSI Pressure Drop
- 90 Degree Cone



- KCD H101002-121489
- 316 SS
- 30,000 #/Hr
- 3-5 PSI Pressure Drop
- 90 Degree Cone
- Bolt holes and Valve Match