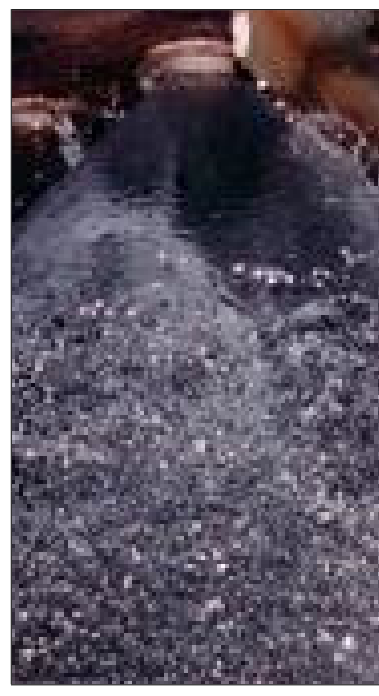
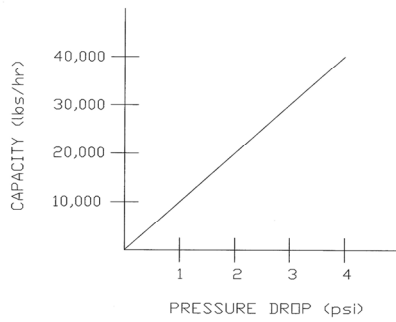




Kansas City Deaerator Spray Valves H042911–S122916



<small>THIS DOCUMENT AND THE INFORMATION IT CONTAINS HAVE BEEN FURNISHED FOR USE BY THE USER. KANSAS CITY DEAERATOR CO. ACCEPTS NO LIABILITY FOR ANY DAMAGE OR LOSS OF PROFITS OR BUSINESS INTERRUPTION RESULTING FROM THE USE OF THIS DOCUMENT. DOCUMENTS WILL BE FURNISHED TO ANY MEMBER OF KANSAS CITY DEAERATOR CO. OVERLAND PARK, KANSAS 66209</small>	<small>CLIENT:</small> <small>DATE:</small>	<small>SCALE:</small> NTS MK PEC JK 6-6 20000 <small>DESIGNED BY:</small> <small>CHECKED BY:</small> <small>DATE:</small>
	<small>MODEL:</small> SVCURVE	<small>TITLE:</small> SPRAY VALVE CAPACITY CURVE

Replaces: Graver 1-69-008

Ecodyne W146SV0002

Angle: 60° (90° available)

Material: 316 SS Per HEI

Flow: 0 to 50,000 #/Hr

Pressure Drop: 0-5 PSIG

Weight: 2 lbs.

Size: 3" X 3" X 3"

Phone: 913-338-2111

Cell: 913-384-2500

Email: Info@deaerator.com



SPRAY HS - Horizontal Spray



TRAY VT - Vertical Tray



TRAY TC - Tank Car



TRAY HH - Horizontal



TRAY DS - Double Shell



SPRAY VS - Vertical Spray